



# PRODUCT CATALOGUE

Since  
1975

Explore our comprehensive range of cable reels, site transformers, lighting systems, and electrical accessories. Every product is built for durability, tested for quality, and designed to meet industry standards. Your go-to source for dependable electrical solutions.



Connecting People With  
**Power**



Scan To DOWNLOAD  
our Catalogue

# Table Of Content

About US	01
Transformers	02-05
Cable Reels	06-13
Extension Reels	14-23
Splitters & Junctions Box	24-26
Plugs & Sockets	27-32
LED & Site Lighting	33-58
Caravan & Camping	59-67
Cable Drum	68-71
Smart Door Locks	72-73
Electric Heater	74-77
Electric Fans	78-81
Power Generation	82-83
Tool Storage	84-85

# ABOUT US

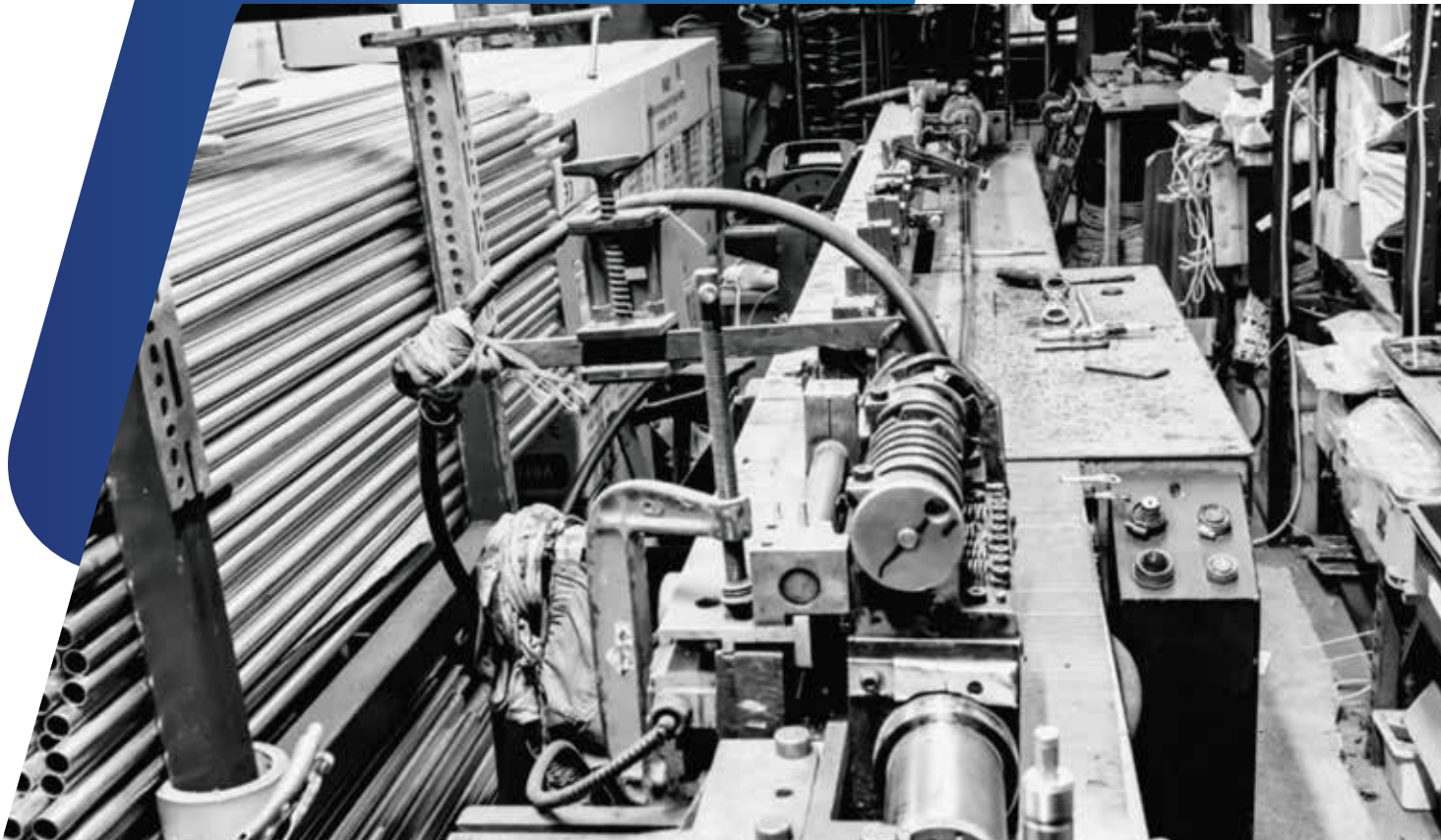
Founded in 1975, Connexion Electrical has grown into a trusted name in the UK electrical industry. From our roots as a distributor, we have evolved into a forward-thinking manufacturer offering a full range of electrical solutions.

Our relocation to a purpose-built facility in Colindale in 1992 marked a turning point in scaling operations and strengthening our innovation pipeline. Today, we serve a diverse client base with high-performance products backed by precision, consistency, and a commitment to quality.

Driven by strategic growth and long-standing partnerships, we continue to adapt to market needs while upholding the standards that have defined us for nearly five decades.

Connecting people with power remains at the core of everything we do.

Explore more at [www.connexionelectrical.co.uk](http://www.connexionelectrical.co.uk)



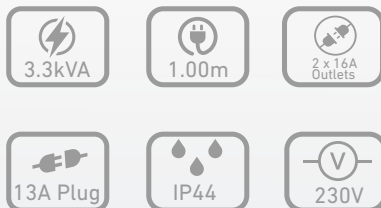
# INTERMITTENT TRANSFORMER

## 110V TRANSFORMER 3.3kVA

Part No. 10961

**3.3kVA Twin  
16A Sockets**

Introducing the 110V Transformer 3.3KVA Portable with dual 16A outputs, designed to safely convert 230V input to 110V, it ensures reliable performance with easy connectivity through a 1x13A plug and a 1.5m cable. Ideal for high-demand application, ensuring top safety and quality standards.



### FEATURES:

- Accepts 230V AC 1 PHASE, suitable for standard power sources
- Provides 110V AC Star Point Earthed, ensuring safe and reliable power distribution.
- Operates at 50/60Hz, compatible with various electrical systems.
- Made from Glass Reinforced Plastic (GRP) for durability and strength.
- Class I, ensuring high safety standards
- 1650VA, indicating its capacity to handle continuous load
- 3000VA, suitable for powering a range of tools and equipment.
- Comes with a 1.0mm 3 core rubber cable, ensuring durability and flexibility, with a length of 3m.
- Equipped with a 13A BS plug for secure and efficient power connection.
- Features a 10A overload switch for protection against electrical overloads.



To view the complete category, please scan the QR code.

Specification	Details
Type	Intermittent Transformer
Power	3.3kVA
Input Voltage	230V AC
Output Voltage	110V AC
IP Rating	IP44
GTIN	5023003000476
Certifications	CE, ROHS, UKCA



1.5m Cable with 16A BS Plug



2 x 16A Outlets

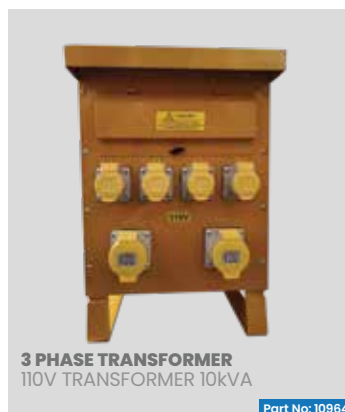
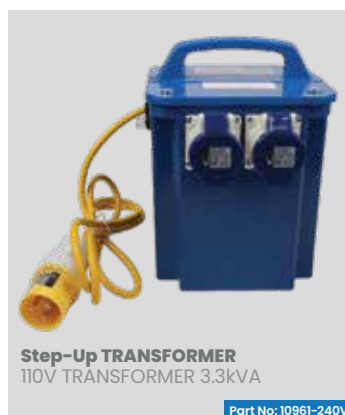


10A Overload Switch

Part No:	Description	kVA	Output Outlets
10959	Site Transformer	1.2kVA	1 x 16A
10960	Portable Transformer	1.5kVA	2 x 16A
10961	Site Transformer	3.3kVA	2 x 16A
10961-32amp	Site Transformer	3.3kVA	1 x 16A, 1 x 32A
10961-240V	Step-Up Transformer	3.3kVA	2 x 16A
10962	Site Transformer	5kVA	2 x 16A , 1 x 32A
10963-10kVA	Site Transformer	10kVA	4 x 16A, 2 x 32A
10964	Site Transformer	10kVA	4 x 16A, 2 x 32A
10965	Continuous Transformer	5kVA	2 x 16A, 1 x 32A
10966	Heater Transformer	5kVA	2 x 16A, 1 x 32A
10967	Three Phase Transformer	20kVA	8 x 16A, 4 x 32A
10968	Single Phase Transformer	10kVA	4 x 16A, 2 x 32A

# TRANSFORMERS

## SECTION CONTENTS





# TRANSFORMERS

## SECTION CONTENTS



# CABLE REELS

## 110V CABLE REEL 50m

Part No. 8045

Maximize safety and efficiency with our 110V Cable Reel 50m featuring a robust iron frame, 1.5mm 3-core PVC cable, and 16A plug and socket with neon light and thermal cut-out. It's designed for optimal performance in demanding environments. This reel ensures a reliable and safe power supply.

### FEATURES:

- 16A MAX, ensuring efficient power handling.
- Features a 1.5mm 3 core PVC cable, ensuring flexibility and durability, with a length of 50m.
- 110V 16A Plug to BS EN60309, ensuring secure connection
- 110V 16A Coupler to BS EN603097, providing versatile connectivity.
- Class I, ensuring high safety standards
- Accepts AC110V, suitable for standard power sources.
- Provides AC110V, ensuring consistent power delivery
- Operates at 50/60Hz, compatible with various electrical systems.
- CE, ROHS, and UKCA, meeting international safety and environmental standards.



**Neon Light  
&  
Thermal Cut-Out**



To view the complete category, please scan the QR code.



Specification	Details
Type	Cable Reel
Power	16A
Input Voltage	110V AC
Outlets	Twin Thermal Cut-Out
IP Rating	IP44
GTIN	5023003000308
Certifications	CE, ROHS, UKCA



50m Cable with 16A Plug



Thermal Cut-Out



Power Indicator

Part No:	Description	Power	Output Outlets	Cable Length
8045	Cable Reel	16A	-	50m
4035	Cable Reel	16A	2 x 16A	25m
10906	LED Strip Light Drum	16A	2 x 16A	25m
8038	Cable Reel	32A	1 x 32A	20m
4055	Cable Reel	16A	2 x 16A	25m
8059	Cable Reel	16A	2 x 16A	50m
8061	Cable Reel Empty Drum	16A	2 x 16A	Accepts up to 50m of 1.5mm cable or 40m of 2.5mm cable

# 110V CABLE REELS

## SECTION CONTENTS



**CABLE REEL**  
110V Cable Reel 25m

Part No: 4035



**CABLE REEL**  
110V Cable Reel 25m

Part No: 4055



**CABLE REEL**  
110V CABLE REEL 20m

Part No: 8038



**CABLE REEL**  
110V CABLE REEL 50m

Part No: 8045



**CABLE REEL**  
110V CABLE REEL 50m

Part No: 8059



**CABLE REEL EMPTY DRUM**  
110V CABLE REEL 50m

Part No: 8061



**LED STRIP LIGHT DRUM**  
110V LED STRIP LIGHT DRUM 25M

Part No: 10906

# CABLE REELS

## 240V CABLE REEL 25m

Part No. 4420

This 240V Cable Reel 25m combines durability, safety, and versatility, featuring four 13-amp sockets for powering multiple devices over long distances. With robust construction and built-in safety mechanisms like thermal overload protection, it's an ideal choice for professional workspaces, outdoor events, and home gardens, ensuring reliable and efficient power distribution.

### FEATURES:

- 13A MAX, ensuring efficient power handling.
- Features a 1.25mm 3 core PVC cable, ensuring flexibility and durability, with a length of 25m.
- Accepts 240V, suitable for standard power sources.
- Provides 240V, ensuring consistent power delivery.
- Class I, ensuring high safety standards
- Equipped with a 240V 13A BS plug for secure connection.
- Includes 4x13A BS sockets, providing versatile connectivity
- Thermal cutout with neon light for additional safety.
- CE, ROHS, and UKCA, meeting international safety and environmental standards.



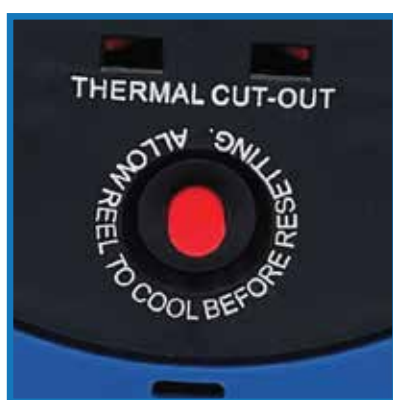
**Neon Light  
&  
Thermal Cut-Out**



Specification	Details
Type	Cable Reel
Power	13A
Input Voltage	240V AC
Output Voltage	240V AC
Safety Feature	Neon Light and Thermal Cutout
IP Rating	IP20
GTIN	5023003002012
Certifications	CE, ROHS, UKCA



25m Cable with 13A Plug



Thermal Cut-Out



Neon Light

Part No:	Description	Power	Output Outlets	Cable Length
4005	Cable Reel	13A	2 x 13A	25m
4037	Cable Reel	32A	1 x 32A	25m
4047	Cable Reel	16A	2 x 16A	25m
4050	Cable Reel	13A	2 x 13A	25m
4057	Cable Reel	16A	2 x 16A	25m
4420	Cable Reel	13A	4 x 13A	25m
4320	Cable Reel	13A	3 x 13A	25m
5070	Cassette Reel	13A	2 x 13A	10m
5072	Cassette Reel	13A	2 x 13A	10m
5074	Cable Reel	16A	4 x 13A	10m
5075	Cassette Reel	16A	4 x 13A	10m
8015	Cable Reel	13A	2 x 13A	50m
8048	Cable Reel	16A	2 x 16A	50m

## CABLE REELS

Part No:	Description	Power	Output Outlets	Cable Length
8052	Cable Reel	13A	2 x 13A	40m
8058	Cable Reel	16A	2 x 16A	50m
8060	Cable Reel Empty Drum	13A	2 x 13A	Accepts up to 50m of 1.5mm cable or 30m of 2.5mm cable
8425	Cable Reel	13A	4 x 13A	50m

# 240V CABLE REELS

## SECTION CONTENTS



**CABLE REEL**  
240V CABLE REEL 25m

Part No: 4005



**CABLE REEL**  
240V CABLE REEL 25m

Part No: 4037



**CABLE REEL**  
240V CABLE REEL 25m

Part No: 4047



**CABLE REEL EMPTY DRUM**  
240V CABLE REEL 25m

Part No: 4050



**CABLE REEL**  
240V CABLE REEL 25m

Part No: 4057



**CABLE REEL**  
240V CABLE REEL 25m

Part No: 4420



**CABLE REEL**  
240V CABLE REEL 25m

Part No: 4320



**CASSETTE REEL**  
240V CASSETTE REEL 10m

Part No: 5070



**CASSETTE REEL**  
240V CASSETTE REEL 10m

Part No: 5072



# 240V CABLE REELS

## SECTION CONTENTS



**CASSETTE REEL**  
240V CASSETTE REEL 10m

Part No: 5073-16amp



**CABLE REEL**  
240V CABLE REEL 10m

Part No: 5075



**CABLE REEL**  
240V CABLE REEL 50m

Part No: 8015



**CABLE REEL**  
240V CABLE REEL 50m

Part No: 8048



**CABLE REEL**  
240V CABLE REEL 50m

Part No: 8051



**CABLE REEL**  
240V CABLE REEL 40m

Part No: 8052



**CABLE REEL**  
240V CABLE REEL 50m

Part No: 8058



**CABLE REEL**  
240V CABLE REEL 50m

Part No: 8425

# EXTENSION LEADS

## 110V EXTENSION LEAD 25m

Part No. 10838

The 110V 25m 2.5mm Extension Lead with 32amp Plug and Coupler is designed to meet the power demands of industrial and construction environments. With a length of 25 meters, this extension lead provides the flexibility to power equipment across long distances without compromising on performance. The 2.5mm cable ensures superior electrical conductivity.

### FEATURES:

- 32A MAX, ensuring efficient power handling.
- Features a 2.5mm<sup>2</sup> 3 core PVC cable, ensuring flexibility and durability, with a length of 25m.
- Accepts 110V, suitable for standard power sources.
- Provides 110V, ensuring consistent power delivery.
- Class I, ensuring high safety standards
- Equipped with a 110V 32A plug for secure connection.
- Includes a 110V 32A Coupler, providing versatile connectivity
- Made of PVC and copper for the cable, and nylon for casing, ensuring durability and strength.
- CE, ROHS, and UKCA, meeting international safety and environmental standards.



**32A Socket & Plug, 25m Cable**



To view the complete category, please scan the QR code.

## EXTENSION LEADS

Specification	Details
Type	Extension Lead
Power	32A
Input Voltage	110V AC
Output Voltage	110V AC
Connections	32A Plug & Sockets
IP Rating	IP44
GTIN	5023003002562
Certifications	CE, ROHS, UKCA



25m Cable



32A Coupler



32A Plug

Part No:	Description	Power	Plug	Cable Length
10801	Extension Lead	16A	16A	14m
10802	Extension Lead	16A	16A	14m
10803	Extension Lead	16A	16A	25m
10826	Extension Lead	32A	32A	14m
10827	Extension Lead	16A	16A	25m
10829	Extension Lead	32A	32A	14m
10837	Extension Lead	16A	16A	10m
10838	Extension Lead	32A	32A	25m
10850	Extension Lead	16A	16A	14m
10851	Extension Lead	16A	16A	14m
10874	Extension Lead	16A	16A	0.5m

# 110V EXTENSION LEADS

## SECTION CONTENTS



**EXTENSION LEAD**  
110V EXTENSION LEAD 14m

Part No: 10801



**EXTENSION LEAD**  
110V EXTENSION LEAD 14m

Part No: 10802



**EXTENSION LEAD**  
110V EXTENSION LEAD 25m

Part No: 10803



**EXTENSION LEAD**  
110V EXTENSION LEAD 14m

Part No: 10826



**EXTENSION LEAD**  
110V EXTENSION LEAD 25m

Part No: 10827



**EXTENSION LEAD**  
110V EXTENSION LEAD 14m

Part No: 10829



**EXTENSION LEAD**  
110V EXTENSION LEAD 10m

Part No: 10837



**EXTENSION LEAD**  
110V EXTENSION LEAD 25m

Part No: 10838



**EXTENSION LEAD**  
110V EXTENSION LEAD 14m

Part No: 10850

# 110V EXTENSION LEADS

## SECTION CONTENTS





# EXTENSION LEADS

## 240V EXTENSION LEAD 14m

Part No. 10805

Elevate your power connectivity with our 240V Extension Lead, spanning 14m with a robust 1.5mm cable and fitted with 16A plug and socket. Built to last and certified with IP44, CE, ROHS and UKCA, ideal for heavy-duty use. Our extension lead reliably fulfills all your electrical requirements.

### FEATURES:

- 16A MAX, ensuring efficient power handling.
- Features a 1.50mm 3 core PVC cable, ensuring flexibility and durability, with a length of 14m.
- Accepts 240V, suitable for standard power sources.
- Provides 240V, ensuring consistent power delivery.
- Class I, ensuring high safety standards
- Equipped with a 240V 16A plug for secure connection.
- Includes a 240V 16A Coupler, providing versatile connectivity
- Made of PVC and copper for the cable, and nylon for casing, ensuring durability and strength.
- CE, ROHS, and UKCA, meeting international safety and environmental standards.



**16A Socket &  
Plug, 14m Cable**





Specification	Details
Type	Extension Lead
Power	16A
Input Voltage	240V AC
Output Voltage	240V AC
Connections	16A Plug & Sockets
IP Rating	IP44
GTIN	5023003000131
Certifications	CE, ROHS, UKCA



14m Cable



16A Coupler



16A Plug

Part No:	Description	Power	Plug	Cable Length
10729	Extension Lead	13A	13A	3m
10730	Extension Lead	13A	13A	5m
10732	Extension Lead	13A	13A	15m
10750	Extension Lead	13A	13A	2m
10751	Extension Lead	13A	13A	3m
10753	Extension Lead	13A	13A	10m
10804	Extension Lead	13A	13A	14m
10805	Extension Lead	16A	16A	14m
10809	Extension Lead	16A	16A	14m
10823	Extension Lead	32A	32A	14m
10824	Extension Lead	13A	13A	14m
10872	Extension Lead	16A	13A	0.5m

## EXTENSION LEADS

Part No:	Description	Power	Plug	Cable Length
10873	Fly Lead	16A	16A	0.5m
30501	Extension Lead	13A	13A	2m
30502	Extension Lead	13A	13A	3m
30503	Extension Lead	13A	13A	5m
30504	Extension Lead	13A	13A	10m
30511	Extension Lead	13A	13A	1m
36501	Extension Lead	13A	13A	2m
36502	Extension Lead	13A	13A	3m
36592	Extension Lead	13A	13A	2m

# 240V EXTENSION LEADS

## SECTION CONTENTS



**EXTENSION LEAD**  
240V EXTENSION LEAD 3m

Part No: 10729



**EXTENSION LEAD**  
240V EXTENSION LEAD 5m

Part No: 10730



**EXTENSION LEAD**  
240V EXTENSION LEAD 15m

Part No: 10732



**EXTENSION LEAD**  
240V EXTENSION LEAD 2m

Part No: 10750



**EXTENSION LEAD**  
240V EXTENSION LEAD 3m

Part No: 10751



**EXTENSION LEAD**  
240V EXTENSION LEAD 10m

Part No: 10753



**EXTENSION LEAD**  
240V EXTENSION LEAD 14m

Part No: 10804



**EXTENSION LEAD**  
240V EXTENSION LEAD 14m

Part No: 10805



**EXTENSION LEAD**  
240V EXTENSION LEAD 14m

Part No: 10809

# 240V EXTENSION LEADS

## SECTION CONTENTS



**EXTENSION LEAD**  
240V EXTENSION LEAD 14m

Part No: 10823



**EXTENSION LEAD**  
240V EXTENSION LEAD 14m

Part No: 10824



**EXTENSION LEAD**  
240V EXTENSION LEAD 0.5m

Part No: 10872



**EXTENSION LEAD**  
240V EXTENSION LEAD 0.5m

Part No: 10873



**EXTENSION LEAD**  
240V EXTENSION LEAD 2m

Part No: 30501



**EXTENSION LEAD**  
240V EXTENSION LEAD 3m

Part No: 30502



**EXTENSION LEAD**  
240V EXTENSION LEAD 5m

Part No: 30503



**EXTENSION LEAD**  
240V EXTENSION LEAD 10m

Part No: 30504

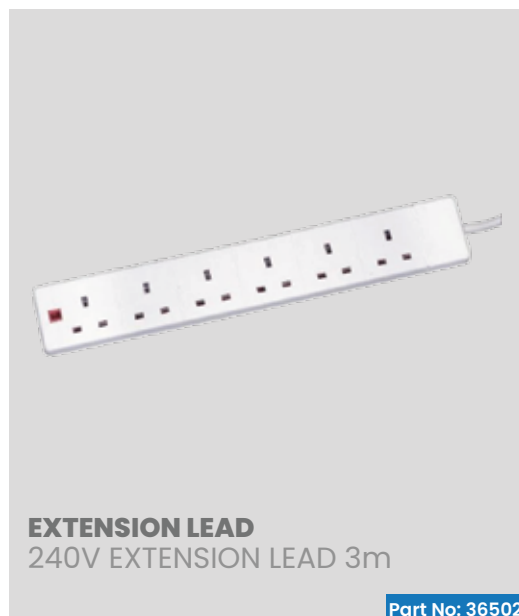


**EXTENSION LEAD**  
240V EXTENSION LEAD 1m

Part No: 30511

# 240V EXTENSION LEADS

## SECTION CONTENTS



# SPLITTER BOX

## 110V SPLITTER BOX 4 WAY

Part No. 10896

The 4-Way 110V Splitter Box is a powerful and versatile power distribution solution. Its sturdy steel casing, 16A input plug, and 4x16A output sockets. The 5m cable length and IP44 rating provide flexibility and protection against water splashes, making it suitable for various indoor and outdoor applications.

### FEATURES:

- 16A MAX, ensuring efficient power handling.
- Features a 2.5mm<sup>2</sup> 3 core PVC cable, ensuring flexibility and durability, with a length of 5m.
- Accepts AC110V, suitable for standard power sources.
- Provides AC110V, ensuring consistent power delivery.
- Class I, ensuring high safety standards.
- 50/60Hz, suitable for various electrical systems.
- Includes a 110V 16A coupler, providing versatile connectivity.
- IP44, protected against solid objects and splashing water.
- CE, ROHS, and UKCA, meeting international safety and environmental standards.



**4x16A Sockets,  
5m Cable**



To view the complete category, please scan the QR code.



Specification	Details
Type	Splitter Box
Power	16A
Input Voltage	110V AC
Output Outlets	4 Way 16amp
Plug	16A
IP Rating	IP44
GTIN	5023003000551
Certifications	CE, ROHS, UKCA



4-Way 16amp Outlets



5m Cable



16A Plug

Part No:	Description	Power	Plug	Output Outlets	Cable Length
10883	Splitter Box	32A	32A	2 x 16A, 2 x 32A	5m
10884	Splitter Box	32A	32A	3 x 16A, 2 x 32A 1 x 16A, 2 x 32A MCB	5m
10885	Splitter Box	32A	32A	4 x 16A, 2 x 32A	5m
10886	Hanging Splitter Box	16A	16A	4 x 16A	5m
10887	Splitter Box	32A	32A	4 x 32A, 3 x MCB	5m
10888	Splitter Box	32A	32A	4 x 32A	5m
10889	Splitter Box	32A	32A	6 x 16A	5m
10895	Splitter Box	16A	16A	4 x 16A	5m
10895-240V	Splitter Box	16A	16A	4 x 16A	5m
10896	Splitter Box	16A	16A	4 x 16A	5m
10897	Splitter Box	16A	32A	4 x 16A	5m

# SPLITTERS & JUNCTIONS BOX

## SECTION CONTENTS



**SPLITTER BOX**  
110V SPLITTER BOX 5m

Part No: 10883



**SPLITTER BOX**  
110V SPLITTER BOX 5m

Part No: 10884



**SPLITTER BOX**  
110V SPLITTER BOX 5m

Part No: 10885



**SPLITTER BOX**  
110V SPLITTER BOX 5m

Part No: 10886



**SPLITTER BOX**  
110V SPLITTER BOX 5m

Part No: 10887



**SPLITTER BOX**  
110V SPLITTER BOX 5m

Part No: 10888



**SPLITTER BOX**  
110V SPLITTER BOX 5m

Part No: 10889



**SPLITTER BOX**  
110V SPLITTER BOX 5m

Part No: 10895



**SPLITTER BOX**  
110V SPLITTER BOX 5m

Part No: 10895-240V

# PLUGS & SOCKETS

## 110V COUPLER 16A

Part No. 10604

Experience reliable and durable connections with this 16A 110V Coupler. Crafted from robust rubber-plastic in a striking yellow and white, this coupler is designed for 110V systems.

Compact and lightweight at just 120 grams, it includes all necessary components for immediate use.

### FEATURES:

- 16A MAX, ensuring efficient power handling.
- Provides AC110V, suitable for standard power sources.
- 110V 16A coupler, providing versatile connectivity.
- Class I, ensuring high safety standards.
- Rubber-Plastic, durable and resilient Material.
- 120 g, lightweight for easy handling.
- IP44, protected against solid objects and splashing water.
- CE, ROHS, and UKCA, meeting international safety and environmental standards.



# IP44



To view the complete category, please scan the QR code.

Specification	Details
Type	Coupler
Power	16A
Input Voltage	110V AC
Output Voltage	110V AC
IP Rating	IP44
GTIN	5023003001008
Certifications	CE, ROHS, UKCA



16A Current Rating



110V Voltage



IP44 Rated

Part No:	Description	Power	Voltage
10604	Coupler	16A	110V
10603	Plug	16A	110V
10833	Coupler	32A	110V
10832	Plug	32A	110V
10614	3-Way Splitter	16A	110V
10616	3-Way Spider	16A	110V

# PLUGS & SOCKETS

## SECTION CONTENTS



# PLUGS & SOCKETS

## 240V COUPLER 32A

Part No. 10833-240V

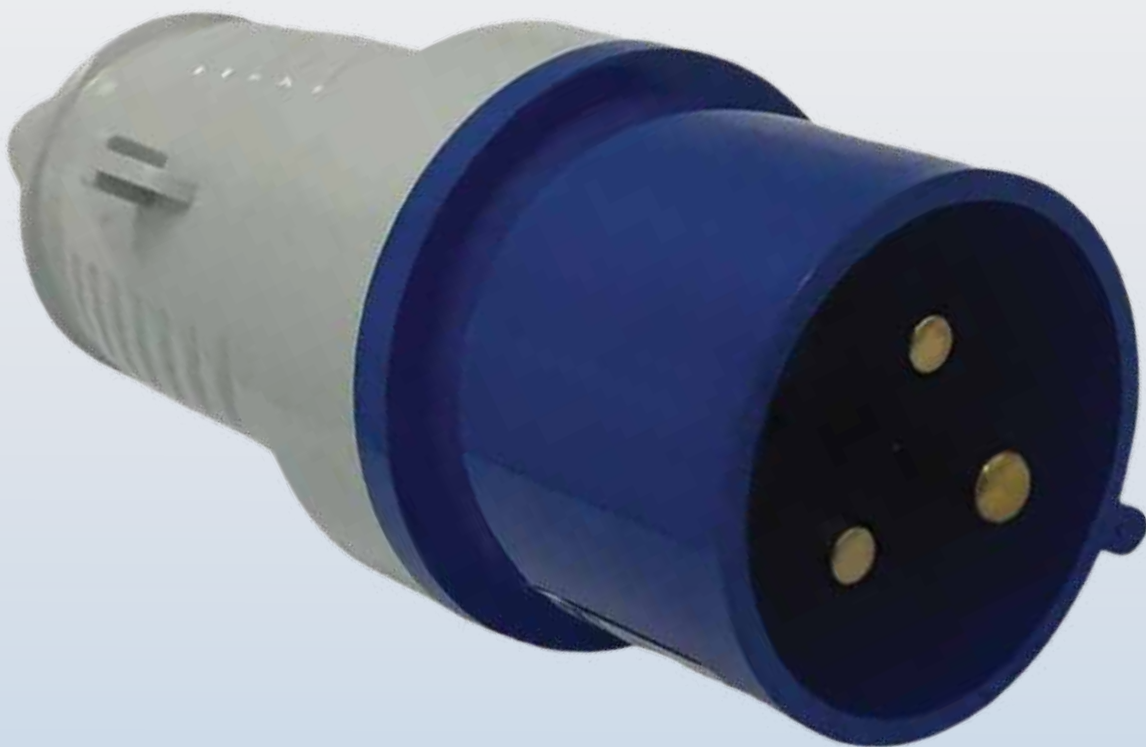
The 240V 32A 3 Pin Industrial Plug is a Heavy-duty electrical connector designed for high-power use in rugged industrial environments. Its robust construction ensures reliable performance, ideal for powering large machinery and heavy tools at construction sites and factories, reducing downtime and increasing efficiency.



### FEATURES:

- 32A MAX, ensuring efficient power handling.
- Provides AC240V, suitable for standard power sources.
- 240V 32A coupler, providing versatile connectivity.
- Class I, ensuring high safety standards.
- Industrial Plug, built for robust industrial environments.
- 50/60Hz, suitable for various electrical systems.
- IP44, protected against solid objects and splashing water.
- CE, ROHS, and UKCA, meeting international safety and environmental standards.

**32A Plug**





Specification	Details
Type	Coupler
Power	32A
Input Voltage	240V AC
Output Voltage	240V AC
IP Rating	IP44
GTIN	5023003002531
Certifications	CE, ROHS, UKCA



32A Current Rating



240V Voltage



IP44 Rated

Part No:	Description	Power	Voltage
10608	Plug	16A	240V
10609	Coupler	16A	240V
10613	RCD Plug	13A	240V
10615	3-Way Splitter	16A	240V
10832-240V	Industrial Plug	32A	240V
10833-240V	Industrial Socket	32A	240V

# PLUGS & SOCKETS

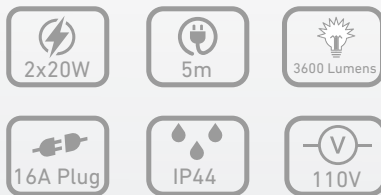
## SECTION CONTENTS



# LED & SITE LIGHTING

## 110V LED Telescopic Dual Head Tripod Light 2x20W Part No. 10914

Illuminate your workspace with the robust 110V LED Telescopic Dual Head Tripod Light 2x20W, model 10914. Featuring a 120-degree lighting angle and 3600 lumens for high efficiency, this die-casting aluminum-bodied light offers durability and optimal illumination in both indoor and outdoor settings, with a lifespan of up to 30k hours.



**2x20W Power,  
16A Plug**



### FEATURES:

- The telescopic design allows for customizable height, ensuring optimal lighting angles for any task.
- With  $\geq 100\text{Lm/W}$ , this light offers bright and energy-efficient illumination.
- Built with a die-casting aluminum body and tempered glass lens, it promises longevity and durability.
- A 120-degree light angle ensures broad and even distribution of light.
- Class I, ensuring high safety standards.
- Perfect for providing ample lighting in construction areas
- Powered by 2x20W LED lights, it delivers a total of 4400 lumens with a color temperature of 6500K for a daylight-like experience.
- With a lifespan of 25,000 – 30,000 hours, it ensures long-term use without frequent replacements.
- Features a robust tripod stand for stability on uneven surfaces.
- Class I safety level ensures secure operation, compliant with CE and RoHS directives.



To view the complete category, please scan the QR code.

### Specification Details

Type	Telescopic Dual Head Tripod Light
Power	2x20W
Input Voltage	110V AC
Lumen Output	3600Lm
Color Temperature	6500k
GTIN	5023003000858
Certifications	CE, ROHS, UKCA



2 x 20W LED Fittings



5m Cable

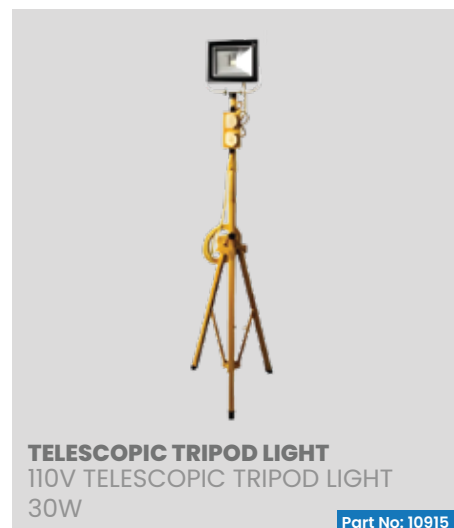


Tempered Glass lens

Part No:	Description	Power	Voltage	Plug	Lumen Output
10913	Telescopic Single Head Tripod Light	20W	110V	16A	2000
10914	Telescopic Dual Head Tripod Light	2x20W	110V	16A	3600
10915	Telescopic Single Head Tripod Light	30W	110V	16A	2600

# LED & SITE LIGHTING

## SECTION CONTENTS



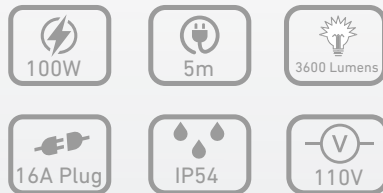
# LED & SITE LIGHTING

## 110V LED Worklight With Tripod Stand 100W

Part No. 10908

The 110V LED Tripod Worklight 100W IP54 is a high-performance lighting solution, delivering 10,000 lumens for powerful illumination. Its adjustable dimmer switch offers three brightness levels (100%, 50%, and 25%) to suit varied tasks. With a bright 6500K color temperature, it provides daylight-like clarity, reducing eye strain and enhancing precision. Designed for stability, it features a robust tripod with a collar lock for secure positioning. This worklight is built for reliability across diverse environments, ensuring consistent performance and comfort during extended use.

**100W Power,  
16A Plug**



### FEATURES:

- The tripod stand allows for customizable height, ensuring optimal lighting angles for any task.
- With  $\geq 100\text{Lm/W}$ , this light offers bright and energy-efficient illumination.
- Rated power of  $120\text{W} \pm 5\%$  delivering 10,000 lumens with a color temperature of 6500K for a bright daylight experience.
- With an IP54 rating, it is protected against dust and splashing water, suitable for both indoor and outdoor use.
- Made of aluminum and ABS, ensuring longevity and durability.
- Provides comprehensive coverage with a 360-degree light spread.
- Dimmer mode switch with 100%, 50%, and 25% brightness settings for customizable lighting.
- Lightweight and easy to transport, perfect for mobile work environments.
- CE, ROHS, and UKCA certified, ensuring high safety standards and environmental compliance.
- Class I safety level ensures secure operation.
- GTIN: 5023003000988, ensuring global trade compatibility.



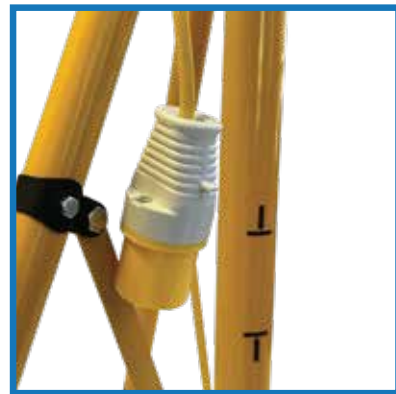
Specification	Details
Type	Worklight with Tripod Stand
Power	100W
Input Voltage	110V AC
Lumen Output	10,000Lm
Additional Function	Dimmer Mode Switch
GTIN	5023003000988
Certifications	CE, ROHS, UKCA



Dimmer Mode Switch



Easy to Transport



16A Plug

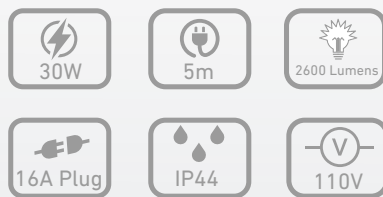


# LED & SITE LIGHTING

## 110V Plasterers Tripod Light 30W

Part No. 10945LED

The 110V 30W Plasterers Tripod Light is a durable, versatile solution for indoor and outdoor use. Its IP44 rating protects against water splashes, and the 30W LED offers bright, energy-efficient illumination. The adjustable tripod stand and 5m cable with a 16A plug ensure flexible placement and reliable power delivery.



**30W Power,  
16A Plug**

### FEATURES:

- The tripod stand allows for customizable height, ensuring optimal lighting angles for any task.
- With  $\geq 85\text{Lm/W}$ , this light offers bright and energy-efficient illumination.
- Powered by a 30W LED, delivering 2600 lumens with a color temperature of 6400K for a bright daylight experience.
- With an IP44 rating, it is protected against dust and splashing water, suitable for both indoor and outdoor use.
- Made of PC (polycarbonate) material, ensuring longevity and durability.
- Rated lamp life of 30,000 hours, ensuring long-term use without frequent replacements.
- Dimmer mode switch with 100%, 50% and 25% brightness settings for customizable lighting.
- Lightweight and easy to transport, perfect for mobile work environments.
- CE, ROHS, and UKCA certified, ensuring high safety standards and environmental compliance.
- Class I safety level ensures secure operation.
- GTIN: 5023003000988, ensuring global trade compatibility.



Specification	Details
Type	Worklight with Tripod Stand
Power	100W
Input Voltage	110V AC
Lumen Output	10,000Lm
Additional Function	Dimmer Mode Switch
GTIN	5023003000889
Certifications	CE, ROHS, UKCA



2 x 16A Outlets



16A Plug



5m Cable

Part No:	Description	Power	Voltage	Plug	Lumen Output
10945-LED	Plasterers Tripod Light	30W	110V	16A	3600

# LED & SITE LIGHTING

## 110V 40W LED Tripod Uplight

Part No. 10949

The 110V 40W LED Tripod Uplight (offers 360° illumination with a powerful 5000lm output. Built with durable PC material and IP54-rated protection, it ensures reliable performance in tough conditions. Featuring energy-efficient SMD 2835 LEDs, it operates in temperatures ranging from -25°C to +50°C, making it a versatile and dependable outdoor lighting solution.

### FEATURES:

- Provides consistent lighting coverage in all directions, making it ideal for outdoor tasks and large areas.
- Achieves over 95lm/W, ensuring bright illumination while being energy-efficient.
- Delivers up to 5000lm, offering powerful lighting for demanding environments.
- Equipped with energy-efficient and long-lasting LED technology, ensuring consistent performance.
- Includes a 110V 16A yellow plug for easy and secure connection to power sources.
- Operates seamlessly within a wide working temperature range of -25°C to +50°C, making it suitable for challenging environments.
- Meets Class I Safety Level, CE, and RoHS standards, ensuring safety and adherence to environmental regulations.



**16A Plug,  
5m Cable**



Specification	Details
Type	Tripod Upload
Power	36W
Input Voltage	110V AC
Output Voltage	110V AC
Cable Length	5m
IP Rating	IP44
GTIN	5023003002517
Certifications	CE, ROHS, UKCA



1x 16A Socket



16A Plug



Folding Tripod

Part No:	Description	Power	Plug	Output Outlets	Cable Length
10949	Up Tripod LED Light	40W	16A	1 x 16A	5m

# LED & SITE LIGHTING

## 110V LED Task Light 20w

Part No. 6694

The 110V LED Task Light (20W) is a durable and energy-efficient solution for tough environments like workshops, construction sites, and outdoor activities. It features a sturdy polycarbonate shell, a 3m cable, and a 16amp plug with 1x16amp outlet for powering additional devices. Offering bright, even illumination, this portable task light is built to last and ensures convenience for various tasks.

### FEATURES:

- 20W, providing ample brightness
- LED ideal for consistent, energy-efficient lighting
- Cable Length: 3 meters, offering flexibility in placement
- Provides AC110V, ensuring consistent power delivery.
- Task Lamp, designed for specific work areas
- Mains, reliable and constant power supply
- 110V, suitable for standard low voltage applications
- IP44 Rating: Water and dust resistant, ideal for industrial and work environments
- CE, ROHS, and UKCA, meeting international safety and environmental standards.



**20W Power &  
16A Plug**



Specification	Details
Type	LED Task Light
Power	20W
Input Voltage	110V AC
Output Voltage	110V AC
Cable Length	3m
IP Rating	IP54
GTIN	5023003000827
Certifications	CE, ROHS, UKCA



16A Plug & Outlet



SMD 2835 LED



3m Cable Length

Part No:	Description	Power	Plug	Cable Length
6691	Fluorescent Task Lamp	38W	16A	3m
10910	Fluorescent Anti Corrosive Link Light	58W	16A	1m
10910LED	LED Link Light	44W	16A	1m



# LED & SITE LIGHTING

## Portable LED Work Light 20w

Part No. 10921-LED

The 110V Portable LED Work Light is a high-performance, energy-efficient lighting solution designed for worksites, garages, and outdoor environments. Featuring a durable and portable design, this 20W LED work light provides bright and consistent illumination while maintaining low energy consumption. With an IP54 rating, this light is dust and splash-resistant, making it ideal for rugged environments and demanding work conditions. The SMD LED technology ensures a high-lumen output, delivering powerful brightness while reducing heat generation and energy costs.

### FEATURES:

- Delivers Bright 20W Illumination consistent and energy-efficient lighting, ideal for professional and outdoor use.
- Provides high-lumen output with minimal heat generation, reducing energy costs and enhancing durability.
- Runs on 110V and 50Hz, offering stable and efficient performance for industrial and worksite applications.
- Lightweight and easy to carry, making it a convenient lighting solution for various tasks.
- Class I – ensures grounded protection for enhanced safety.
- IP54 – dust and splash-resistant, ideal for construction sites, workshops, and garages

**20W Power &  
16A Plug**



Specification	Details
Type	Portable LED Work Light
Power	20W
Input Voltage	110V AC
Output Voltage	110V AC
Cable Length	3m
IP Rating	IP54
GTIN	5023003001169
Certifications	CE, ROHS, UKCA



20W



16A Plug



SMD LED

Part No:	Description	Power	Plug	Voltage	Cable Length
10912	LED Mini Pod Light	20W	16A	110V	3m
10916	LED Mini Pod Light	30W	16A	110V	3m
10921-LED	Portable LED Worklight	20W	16A	110V	3m

# LED & SITE LIGHTING

## LED Gripper Hand Lamp 15W

Part No. 88881

This 110V LED Gripper Hand Lamp 15w 16amp Inspection Light offers superior illumination with its 1500 lumens SMD LED technology, ensuring vibrant and consistent light. Its 360-degree illumination enhances visibility for inspection and maintenance tasks. Durable and versatile, this lamp is ideal for construction and railway work. Featuring an easy-to-hold grip and user-friendly design, it provides efficient lighting solutions for professional use.

### FEATURES:

- Produces 1500 lumens of powerful light with just 15W, combining excellent performance with energy efficiency.
- Provides complete all-around lighting, ensuring no dark spots in your workspace. Perfect for inspections and detailed tasks.
- Emits clear (6400–6500K), natural daylight-like light, making it easier to focus and reducing eye strain during prolonged use.
- Built to operate in a wide temperature range (–15°C to 45°C), ensuring reliable use in various conditions.
- Equipped with a 3-meter, 1.0mm power line and a 16A CEE plug, offering flexibility and ease of connection.
- With a lifespan of 30,000 hours, it ensures long-term usage with minimal maintenance.
- With a lifespan of 30,000 hours, it ensures long-term usage with minimal maintenance.
- Certified under CE, RoHS, and UKCA standards, ensuring reliable safety and environmental compliance.



**15W Power &  
16A Plug**



Specification	Details
Type	LED Gripper Hand Lamp
Power	15W
Input Voltage	110V AC
Output Voltage	110V AC
IP Rating	IP44
GTIN	5023003000926
Certifications	CE, ROHS, UKCA



15W



1500 Lumens



16A Plug

Part No:	Description	Power	Plug	Cable Length
88881	LED Gripper Hand Lamp	15W	16A	3m
88882	LED Gripper Light	15W	13 A	3m

# EXTENSION LEAD

## 110V Dawn LED Worklight 16A Part No. 10907

The 110V Dawn LED Worklight Plug 2 x 16amp Outlets is a high-performance, versatile lighting solution designed for demanding work environments. Equipped with a 16amp plug and two 16amp outlets, efficient LED illumination. The durable construction and LED technology ensure long-lasting, energy-efficient performance, making it ideal for construction sites, warehouses, and outdoor job sites.

### FEATURES:

- 35W MAX, ensuring efficient power handling.
- Features a 1.50mm 3 core PVC cable, ensuring flexibility and durability, with a length of 3m.
- Accepts 110V, suitable for standard power sources.
- Provides 110V, ensuring consistent power delivery.
- Class I, ensuring high safety standards.
- Equipped with a 110V 16A plug for secure connection.
- 4000 Lumens, for bright, clear visibility in outdoor or indoor settings.
- Includes an ON/OFF switch and dual 16A CEE outlet sockets for additional utility.
- IP54, offering protection against dust and splashing water



**2x16A Sockets &  
16A Plug, 3m Cable**



Specification	Details
Type	Dawn LED Worklight
Power	35W
Input Voltage	110V AC
Output Voltage	110V AC
IP Rating	IP54
GTIN	5023003000971
Certifications	CE, ROHS, UKCA



2 x 16A Outlets



16A Plug



3m Cable

Part No:	Description	Power	Plug	Cable Length
10907	Dawn LED Worklight	35W	16A	3m



# LED & SITE LIGHTING

## 110V LED Hand Lamp 6w

Part No. 66662

The 110V LED Hand Lamp 6w 16amp Plug is a compact and efficient lighting solution perfect for a variety of indoor applications. With 6W of LED power, this light bar provides bright, clear illumination while being energy-efficient. The 16amp plug ensures a secure and stable power connection for safe use in various settings, including under-cabinet lighting, workspaces, or accent lighting in kitchens and offices.

### FEATURES:

- 6W, ensuring powerful, energy-efficient illumination across extensive areas.
- Ensures a stable and secure power connection for reliable performance in various indoor settings.
- 5-Meter Cable flexibility and convenience by allowing ample reach to connect to distant power sources.
- Built to last, with a robust design that withstands everyday use in workspaces, kitchens, and offices.
- Perfect for under-cabinet lighting, task lighting in workspaces, or accent lighting to enhance interiors.
- Slim and compact, it easily fits into tight spaces without compromising on performance.



**6W Power &  
16A Plug**



Specification	Details
Type	USB LED Rechargeable Light Bar
Power	6W
Input Voltage	110V AC
Output Voltage	110V AC
IP Rating	IP44
GTIN	5023003000797
Certifications	CE, ROHS, UKCA



6W LED Power



3m Cable



16A Plug

Part No:	Description	Power	Cable Length
10816	LED Floodlight	100W LED	5m
10817	LED Floodlight	200W LED	5m
10909	LED Anti-Corrosive Magnetic Light	30W LED	5m
10909b	LED Anti-Corrosive Emergency Magnetic Light	30W LED	5m
6664	USB LED Rechargeable Light Bar	6W	-
10917	Rechargeable LED Worklight	10W LED	-
10918	USB LED Rechargeable Light Bar	6W	-
66662	LED Hand Lamp Rechargeable	6W LED	5m

# LED & SITE LIGHTING

## 110V LED Festoon Lighting Kit 50m

Part No. 10933-50m

This 110V LED Festoon Lighting Kit 50m 120watts 16amp is an ideal solution for illuminating large outdoor spaces, construction sites, and events. This high-performance kit features 50 meters of LED lighting, delivering 120watts of bright and energy-efficient illumination. The 16amp plug ensures secure power connection, making it perfect for heavy-duty use in work environments or temporary installations.

### FEATURES:

- 120W, ensuring powerful, energy-efficient illumination across extensive areas.
- 15 x 8watts SMD LED, high-intensity for superior brightness.
- 15 x 960Lm, totaling 14,400 lumens / head for exceptional visibility.
- 6400K, creates a bright, daylight-like environment.
- 16A 110V BS EN60309 IP44, robust and waterproof, ideal for outdoor settings.
- 50 meters total with strategic placement for optimal lighting.
- Ideal for large outdoor spaces, construction sites, and events, providing reliable and continuous lighting
- Hanging hook allows for convenient overhead mounting, ideal for hands-free lighting in elevated or hard-to-reach areas.
- IP65 for lamps, dust-tight and protected against jets of water, perfect for all weather conditions
- Easy and quick installation on scaffolding, beams, or temporary structures



### Hanging Hooks



Specification	Details
Type	LED Festoon Lighting Kit
Power	15 x 8W
Lamp Lumens	15 x 960
Voltage	110V AC
IP Rating	IP65
GTIN	5023003002197
Certifications	CE, ROHS, UKCA



15 x 8W SMD LED



16A Plug



50m Cable

Part No:	Description	Power	Plug	Cable Length
10919	LED Link Lights	80W	16A	8m
10930ELED	LED Festoon Kit 100W ES	100W ES	16A	22m
10930-22m	LED Festoon Kit 70W	70W	16A	22m
10932	Led festoon kit 50W Rubber Cable	50W	16A	22m
10933-50m	LED festoon kit 120W	120W	16A	50m
10935	Emergency Kit For Festoon	50W	16A	-

# LED & SITE LIGHTING

## SECTION CONTENTS



# LED & SITE LIGHTING

## 240V LED Bulk-Head 6w

Part No. 10953

The 240V LED Bulk-Head 6w Emergency Worklight IP65 is designed to provide efficient lighting while ensuring safety in case of power outages. With its compact and robust construction, this bulkhead light is ideal for both indoor and outdoor use, delivering a bright and clear light output. It operates with a low power consumption of 6W, making it a cost-effective solution for residential, commercial, and industrial environments.



### FEATURES:

- 6W, offering energy efficiency with low power consumption.
- Efficient lighting in both indoor and outdoor settings, enhancing safety during power outages.
- Provides bright and clear light output suitable for residential, commercial, and industrial environments.
- Features a 3-hour emergency battery backup to ensure continuous lighting during power failures.
- LED technology reduces energy usage and operational costs, supporting sustainable practices.
- Longer lifespan than traditional lighting solutions, helps in reducing maintenance costs and carbon footprint.
- Those seeking a durable, reliable, and cost-effective lighting solution with environmental benefits.
- IP65, protected against dust and water, versatile for various installation locations.

**6 Watt Power,  
110V-240V**





Specification	Details
Type	LED Bulk-Head
Power	6W
Input Voltage	110V AC
Luminous Flux	800lms
Life Span	30,000hrs
Full charging	24Hrs
GTIN	5023003002418
Certifications	CE, ROHS, UKCA



6W



6400k Color Temp



110V-240V

Part No:	Description	Power	Voltage	Color Temp	IP Rating
10951	LED Bulk-Head	6W	240V	6400K	IP65
10952	LED Bulk-Head RED	6W	240V	6400K	IP65
10953	Emergency LED Bulk-Head	6W	110V	6400K	IP65

# LED & SITE LIGHTING

## Magnetic LED Worklight

Part No. 88884

The 10W LED Rechargeable Magnetic Light, Camping Light is your ideal companion for bright and reliable lighting in various work environments. Compact yet powerful, this worklight delivers an impressive 980 lumens, ensuring your workspace is always well-lit. The dual-beam functionality offers both wide-angle flood lighting and a more focused beam, making it versatile for different tasks. Whether you need to light up a broad area or focus on a specific spot, this worklight adapts effortlessly.

### FEATURES:

- 10W, offering energy efficiency with low power consumption.
- USB-C 5V-2A, enabling easy and versatile charging options.
- USB-A 5V-2A, allowing it to serve as a power bank for charging other devices.
- COB/980lm 5500k, providing a bright and powerful light output ideal for work or camping environments.
- Hanging hook allows for convenient overhead mounting, ideal for hands-free lighting in elevated or hard-to-reach areas.
- Flood Light, offers wide and even light dispersion.
- Blue/Black, stylish and suitable for various user preferences.
- Plastic, lightweight yet durable for both everyday and rugged use.

**10W**



Specification	Details
Type	Magnetic 10W LED Worklight
Power	10W
Input	USB-C 5V-2A
Output	USB-A 5V-2A
Main LED	COB/980lm 5500k
GTIN	5023003002357



4 Brightness Level



USB-A & USB-C



Magnet, Hanging Hook  
& Emergency Fitting

Part No:	Description	Power	Voltage	Color Temp	IP Rating
88887	LED Globe Light	30W	110V	6400K	IP54

# CARAVAN & CAMPING

## 240V Caravan Hookup Lead 10m

Part No. 10743

The ultimate power solution for caravans and workspaces. This 10m heavy-duty extension lead provides ample length, durability, and high-power capacity. Built with a sturdy 2.5mm cable and a 16amp plug, it ensures reliable and safe power transmission. The bright orange design adds visibility for convenience and safety, making it perfect for outdoor adventures or large workspaces.



### FEATURES:

- 10m length for flexible positioning of devices.
- Crafted with robust 2.5mm cable for longevity and heavy-duty use.
- Features a 16amp plug for high-power requirements and stable connections.
- Rated for 240 volts, suitable for standard high-power electrical equipment.
- Ideal for powering setups in caravans and various work environments.
- Bright orange cable increases visibility, reducing the risk of tripping accidents.
- Plastic, lightweight yet durable for both everyday and rugged use.

**16A Plug,  
10m Cable Length**



To view the complete category, please scan the QR code.

Specification	Details
Type	Caravan Hookup Lead
Cable Length	10m
Cable Diameter	2.5mm
Voltage	240V
Plug	16A
GTIN	5023003002029



16A Plug



10m Cable Length



240V

Part No:	Description	Plug	Voltage	Cable Length	Cable Diameter
10743	Caravan Hookup Lead	16A	240V	10m	2.5mm
10744	Caravan Hookup Lead	16A	240V	25m	2.5mm
10745	Caravan Hookup Lead	16A	240V	15m	1.5mm
10746	Caravan Hookup Lead	16A	240V	15m	2.5mm
10748	Caravan Hookup Lead	16A	240V	10m	1.5mm
10749	Caravan Hookup Lead	16A	240V	25m	1.5mm

# CARAVAN & CAMPING

## SECTION CONTENTS



**CARAVAN HOOKUP LEAD**  
240V Caravan Hookup Lead 10m

Part No: 10743



**CARAVAN HOOKUP LEAD**  
240V Caravan Hookup Lead 25m

Part No: 10744



**CARAVAN HOOKUP LEAD**  
240V Caravan Hookup Lead 15m

Part No: 10745



**CARAVAN HOOKUP LEAD**  
240V Caravan Hookup Lead 15m

Part No: 10746



**CARAVAN HOOKUP LEAD**  
240V Caravan Hookup Lead 10m

Part No: 10748



**CARAVAN HOOKUP LEAD**  
240V Caravan Hookup Lead 25m

Part No: 10749



# CARAVAN & CAMPING

## 4x13amp Extension Lead Reel 10m

Part No. 5075

A perfect outdoor power solution, this 10m cable reel features 4 sockets and supports multiple devices simultaneously. Its durable build is designed for outdoor use, ensuring reliability and safety with a thermal cut-out to prevent overheating. Compact yet functional, it's ideal for caravans, camping, and outdoor events, keeping you powered up wherever you go.



### FEATURES:

- 16A MAX, ensuring efficient power handling.
- Provides AC240V, suitable for standard power sources.
- Includes a 240V 16A plug, providing versatile connectivity.
- Class I, ensuring high safety standards.
- Ideal for caravans, motorhomes, and camping sites, offering flexible power solutions on the go.
- 50/60Hz, suitable for various electrical systems.
- IP44, protected against solid objects and splashing water.
- CE, ROHS, and UKCA, meeting international safety and environmental standards.

Neon light & thermal cut-out, 16A plug





Specification	Details
Type	Extension Lead Reel
Power	16A
Voltage	240V AC
Cable Length	10m
No. of Outlets	4 x 13A Sockets
GTIN	5023003002043
Certifications	CE, ROHS, UKCA



16A Plug



4 x 13A Sockets



10m Cable Length

Part No:	Description	Plug	Voltage	No. of Outlets
5074	Extension Lead Reel	13A	240V	4 x 13A
5075	Extension Lead Reel	16A	240V	4 x 13A

# CARAVAN & CAMPING

## 3 Way Mobile Mains Power Unit 15m Part No. 5076

Heavy-Duty Power Extension 3 Way Mobile Mains Power is the ideal power distribution solution for both industrial and domestic use. Equipped with a 16amp site plug and a heavy-duty 15m H05VV-F 3G1.5 cable, this extension reel is perfect for construction sites, workshops, garages, and outdoor events. It features three 13A dust & splash-proof BS sockets and two USB outputs for added convenience. The built-in 25A RCCB (earth leakage cut-out), 10A MCB, and power-on indicator lamp provide top-tier protection, ensuring safety with every use. With an IP44 rating .

### FEATURES:

- 3 Way Mobile Mains Power Unit 15m with 2x USB & LED Light.
- Cable Length: 15m H05VV-F 3G1.5 cable with 16A site plug
- Three 13A dust & splash-proof BS sockets, two USB outputs.
- 25 Amp RCCB (Earth leakage cut-out) with test button, double pole 10A MCB, power-on indicator lamp.
- LED Light: 5V, 1.5W (Max).
- Maximum Output: 2500W (cable fully extended), 1000W (cable fully reeled).
- USB Input Voltage: 100-250V~.
- USB Output: 5VDC 2.1A (with LED light off), 5VDC 1.6A (with LED light on).



**4 x 13A Socket,  
16amp Plug**



Specification	Details
Type	Extension Lead Reel
Plug	16A
Voltage	240V AC
Sockets	13A x IP44, 2 x USB
Indicator	LED Power-on
GTIN	5023003002555
Certifications	CE, ROHS, UKCA



16A Plug



3 Way Sockets



25amp RCCB

Part No:	Description	Plug	Voltage	No. of Outlets
5076	Extension Lead Reel	16A	100-250V	3 Way

# CARAVAN & CAMPING

## 240V Mobile Mains Power Unit 13A

Part No. 30505

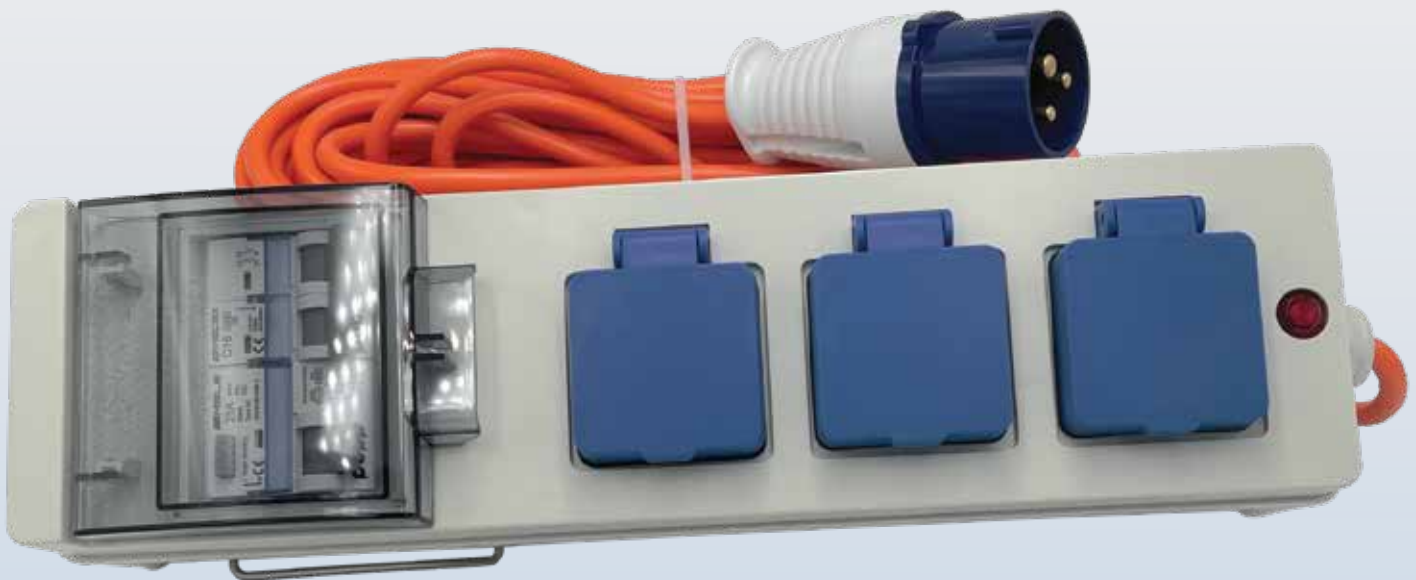
The 240V Mobile Mains Power Unit 13amp Sockets 16amp Plug Switch offers an impressive 15-meter cable length, providing you with ample reach to connect your devices even when the power source is far away. This extension lead is designed to handle 240V and is equipped with a 16A plug, making it perfect for heavy-duty usage. Whether you're powering kitchen appliances, lights, or other essential equipment, this lead ensures you have the power you need, right where you need it.

### FEATURES:

- Capable of supporting up to 3680W, suitable for high-wattage appliances and equipment.
- Offers a 15-meter cable for easy connection to distant power sources.
- Features three 13amp UK 3 pin sockets for simultaneous use of multiple devices.
- Includes a built-in circuit breaker and RCD switch to prevent overloading and electrical hazards.
- Built to withstand outdoor conditions with an IP44 rating for dust and splash resistance.



**3 Way,  
16amp Plug**



Specification	Details
Type	Extension Lead Reel
Power	3680W
Voltage	240V AC
Additional Protection	Built-in Circuit Breaker
IP Rating	IP44
GTIN	5023003002258
Certifications	CE, ROHS, UKCA



16A Plug



Three Uk 3 pin



MCB and RCD Switch

Part No:	Description	Plug	Voltage	No. of Outlets
10700B	Caravan Hookup Extension Lead	16A	240v	4 x 13A
30503-16amp	Caravan Hookup Extension Lead	16A	240v	4 x 13A
30505	Mobile Mains Power Unit	16A	240v	3-Way

# Cable Drum

## 110V Cable Drum 100m

Part No. 10900

The 110V Cable Drum features 100 meters of durable, 1.5mm<sup>2</sup> 3-core yellow cable, ideal for a wide range of electrical applications. Suitable for both domestic and commercial use, it offers flexibility, easy handling, and reliable performance for lighting circuits, power outlets, and more. Built for durability and safety, this cable is perfect for professional electricians and DIY projects alike.

### FEATURES:

- Offers extensive reach, making it ideal for large-scale electrical installations or long-distance connections on-site.
- Suitable for a variety of standard electrical applications, including lighting circuits and power outlets.
- Includes live, neutral, and earth wires, ensuring safe and complete electrical connections.
- Bright yellow outer sheath for easy identification and adherence to site safety and color-coding standards.
- Built with high-quality materials to resist wear, abrasion, and environmental stress, ensuring long service life.
- Designed for smooth handling and installation, reducing time and effort during setup.
- Perfect for domestic projects, commercial environments, and temporary site setups—trusted by electricians and DIYers alike.

**100m Cable,  
1.5mm 3-Core**



To view the complete category, please scan the QR code.



Specification	Details
Type	Cable Drum
Cable Length	100m
Cable Diameter	1.5mm
Voltage Rating	110V
Core	3 Core
GTIN	5023003000094



100m Cable



1.5mm Cable Diameter



3 Core

Part No:	Description	Cable Length	Cores
10900	Cable Drum	100m	3
10901	Blue Cable Drum	100m	3



# Cable Drum

## 110V Cable Drum 100m

Part No. 10902

The 110V Cable Drum 100m 2.5mm<sup>2</sup> 3 Core – Yellow is a heavy-duty, high-performance cable ideal for demanding electrical installations. With 100 meters of durable, flexible cable, it's perfect for power circuits, socket outlets, and other commercial, residential, or industrial applications. Featuring a 2.5mm<sup>2</sup> core size and high-visibility yellow sheath, it ensures safe, reliable, and easy-to-identify wiring in any environment.

### FEATURES:

- Offers extensive reach, making it ideal for large-scale electrical installations or long-distance connections on-site.
- Suitable for a variety of standard electrical applications, including lighting circuits and power outlets.
- Includes live, neutral, and earth wires, ensuring safe and complete electrical connections.
- Bright yellow outer sheath for easy identification and adherence to site safety and color-coding standards.
- Built with high-quality materials to resist wear, abrasion, and environmental stress, ensuring long service life.
- Designed for smooth handling and installation, reducing time and effort during setup.
- Perfect for domestic projects, commercial environments, and temporary site setups—trusted by electricians and DIYers alike.

**100m Cable,  
2.5mm 3-Core**



To view the complete category, please scan the QR code.

Specification	Details
Type	Cable Drum
Cable Length	100m
Cable Diameter	1.5mm
Voltage Rating	110V
Core	3 Core
GTIN	5023003000117



100m Cable



2.5mm Cable Diameter



3 Cores

Part No:	Description	Cable Length	Cores
10902	Cable Drum	100m	3
10903	Blue Cable Drum	100m	3

# Smart Door Lock

## Smart Door Lock

Part No. SC-SLW1006

The WiFi Smart Door Lock SC-SLW1006 offers advanced security and convenience, combining cutting-edge fingerprint technology, versatile access management, and customizable features. It supports up to 100 fingerprints and 300 user groups, operates efficiently in extreme conditions, and provides quick unlocking in just 1 second. With its robust design and innovative features, it ensures both safety and ease of use for homes and offices.

### FEATURES:

- Identifies fingerprints in  $\leq 0.6$  seconds with low rejection and false recognition rates, ensuring precise access control.
- Accommodates up to 100 fingerprints, 9 administrator profiles, and 300 user groups with entry options like fingerprints, passwords, and cards.
- Offers customizable password lengths (6–8 digits) with virtual cipher encryption for enhanced security and usability.
- Operates with minimal power consumption and unlocks doors in just 1 second for smooth access.
- Designed to function in extreme conditions ( $-25^{\circ}\text{C}$  to  $60^{\circ}\text{C}$ , 20–90% humidity), making it adaptable to various environments.

**4 AA Batteries,  
9 Group Admin**



Specification	Details
Type	Smart Door Lock
Number of administrators	9 groups
Number of fingerprints	100pcs
Fingerprint recognition angle	360 degrees
Batteries	4 AA batteries
Power Supply	6W
GTIN	5023003001640



Video Intercom Integration



Diverse Unlocking Capabilities



Wi-Fi-Enabled Remote Control

# ELECTRIC HEATER

## 240V Electrical Site Heater 800w

Part No. 10940

The 240V Electrical Site Heater 800w 120°/360° IPX4 infrared Oscillating Heater 360° is designed to keep you warm and comfortable in any outdoor setting. With an 800W power output and a voltage range of 220V to 240V, this heater provides efficient and consistent warmth. It offers two heating settings—400W and 800W—allowing you to adjust the heat output to your preference. Whether you need a gentle warmth or a more robust heat, this patio heater has you covered.

### FEATURES:

- Delivers up to 800W power output with adjustable heat settings (400W/800W) for customized warmth.
- Includes a tip-over switch that automatically shuts off the heater if accidentally knocked over, ensuring reliable safety features.
- Equipped with a carbon fibre tube reflector capable of swinging 360°/120°, offering uniform heat distribution across the space.
- Measures 23x23x44 cm, making it easy to fit into small spaces while delivering efficient heating.
- Comes with a 180cm cable featuring an EU plug, offering versatility and ease of placement.
- Operates on 220V-240V, suitable for various power setups without compromising efficiency.
- Lightweight and easy to move, ideal for patios, balconies, or any outdoor areas where flexible heating is needed.

**Oscillating Heater  
360°**



To view the complete category, please scan the QR code.

Specification	Details
Type	Portable Patio Heater
Power	800W
Input Voltage	240V
Additional Function	2 Heat Settings
IP Rating	IP44
GTIN	5023003002296
Certificate	CE, ROHS, UKCA



Carbon fibre tube swing by 120°/360°



2 Modes-400w/800w,  
Tip Over Switch



Safety Grills

# ELECTRIC HEATER

## 110V Electrical Site Heater 1200w

Part No. 10941

The 110V Electrical Site Heater 1200W IP65 is a powerful and durable heating solution designed for use in construction sites, workshops, and outdoor environments. With a 1200W power output, this heater is perfect for providing reliable warmth in areas that need efficient heating. The 2.5mm cable and 16amp 110V plug ensure a secure connection to power, while the compact design (76x25x16cm) makes it portable and easy to use in any workspace. Whether you're heating a temporary workspace or keeping your team comfortable on-site, this site heater delivers reliable performance.

### FEATURES:

- 1200W for efficient and reliable heating.
- Waterproof and dustproof for use in tough environments.
- 16amp 110V plug for secure and stable power connection.
- 2.5mm cable for durability and flexibility.
- Portable size (76x25x16cm) for easy handling and transport
- CE and ROHS approved for safety and compliance.
- 5kg for easy mobility and setup.

**1200W Power,  
110V**





Specification	Details
Type	Electrical Portable Heater
Power	1200W
Input Voltage	110V
Additional Function	Gold Heating Element
IP Rating	IP65
GTIN	5023003001114
Certificate	CE, ROHS, UKCA



Waterproof ON/OFF Switch



2.5mm Cable



Gold Heating Element

# ELECTRICAL FANS

## Louver Pedestal Fan

Part No. 10942

The Louver Pedestal Fan CX by Royal Fan offers efficient cooling with a 350 mm sweep size and an impressive airflow rate of 68 m<sup>3</sup>/min, suitable for large spaces. It features three speed settings, a top speed of 1430 RPM, and Class I protection for durability. Designed for energy efficiency with a power factor of 0.97, it includes an induction speed regulator for ease of use. The fan also has an oscillating function and versatile placement options, ensuring consistent airflow for home or office environments.

### FEATURES:

- Delivers 68 m<sup>3</sup>/min of airflow, ideal for cooling larger spaces.
- Customizable airflow with a maximum of 1430 RPM for comfort and noise control.
- Durable design with Class I protection for long-lasting safety and reliability.
- High power factor of 0.97 ensures lower energy consumption and reduced impact.
- Induction-type control for easy adjustment of cooling preferences.
- Allows flexible placement with an oscillating feature for even airflow.
- Suitable for homes, offices, and industrial spaces with efficient motor performance.

**60W Power,  
220V-240V**

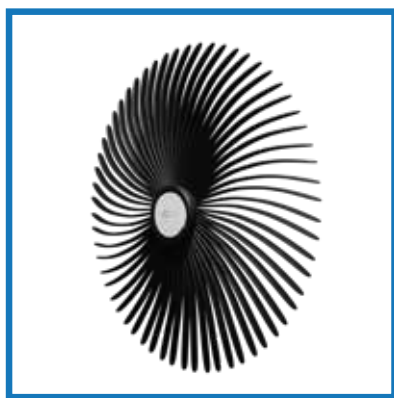


To view the complete category, please scan the QR code.

Specification	Details
Type	Louver Pedestal Fan
Power	60W
Input Voltage	240V
3 Speed Settings	Adjustable Airflows
Auto Timer	Yes (With Remote Control)
GTIN	5023003002227
Height Adjustments	Yes



Auto Timer with Remote Control



Moving Grill: Air Dispersion



220-240V

# ELECTRICAL FANS

## Louver Table Fan

Part No. 10944

The Louver Table Fan CX by Royal Fan ensures efficient cooling with a 350 mm sweep and 68 m<sup>3</sup>/min airflow, ideal for homes and offices. It features three-speed settings, an adjustable louver, and a durable six-blade design. With Class I protection, an IP20 rating, and energy-efficient operation at 60W, it offers safety and reliability. Compact and portable, its oscillation function provides powerful airflow with ease.

### FEATURES:

- Delivers 68 m<sup>3</sup>/min airflow for effective cooling in homes and offices.
- Adjust airflow with a maximum speed of 1430 RPM for personalized comfort.
- Consumes only 60W of power with a high power factor of 0.97 for cost-effective cooling.
- Offers simple and hassle-free control of airflow for all users.
- Lightweight and portable with bush-type bearings, suitable for desks or limited spaces.
- Provides Class I protection against electric shocks and an IP20 rating for safeguarding against solid objects.
- Ensures comfortable air circulation without noise, perfect for various indoor environments.

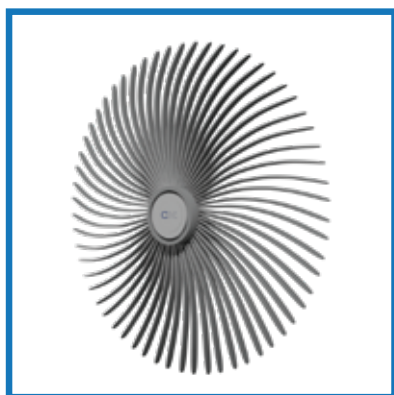


**60W Power,  
220-240V**

Specification	Details
Type	Louver Table Fan
Power	60W
Input Voltage	240V
3 Speed Settings	Adjustable Airflows
Auto Timer	Yes (With Remote Control)
Head Rotation	180°/360°
GTIN	5023003002166



Auto Timer with Remote Control



Moving Grill: Air Dispersion



220-240V

# POWER GENERATION

## Solar/DC Battery Power Station 1000w

Part No. Powercell1280

Connexion's Solar/DC Battery Power Station 1000w is a robust and portable battery power station designed to provide reliable energy storage and on-the-go power. Whether you're camping, working remotely, or facing an emergency situation, this versatile power station ensures you stay connected and powered up. Whether you're off the grid, at a remote worksite, or preparing for emergencies, the POWERCELL1280 ensures you have the energy you need. Stay powered up and connected with this reliable battery power station.

### FEATURES:

- 1280 watt-hours (Wh) to power devices and small appliances.
- Handles up to 1000 watts for essentials like laptops and fans.
- BSEN 60309 compliant for simultaneous gadget or tool charging.
- Lithium Phosphate (LiFePo4) cells ensure long life, safety, and efficient storage.
- Shields against solid objects larger than 1mm and water splashes, suitable for outdoor use.
- Shows real-time battery, power status, and charging progress for easy monitoring.
- Weighs 22.20kg and has portable dimensions for convenience.



**1280W Power,  
110V**



To view the complete category, please scan the QR code.

Specification	Details
Type	Battery Power Station
Power	1000W
Input Voltage	2/DC/Solar
Output Voltage	2x16A
Battery Cells	Lithium Phosphate
Solar Charging Time	120Watt for 15-20hrs
GTIN	5023003002340



2 /DC/ Solar



1280Watt



Lithium Phosphate (LiFePo4)



# TOOL STORAGE BOX

## ProStor Heavy Duty Back Pack

Part No. TB-09

Crafted from durable 600D polyester, this versatile travel bag is designed for functionality and organization. Measuring 37×22×54cm and weighing 3430g, it features 4 exterior pockets and an impressive 52 interior pockets, perfect for storing tools, accessories, or travel essentials. Hidden shoulder straps and additional internal organizers enhance carrying comfort and convenience. The telescopic trolley handle with stop button and high-quality nylon wheels ensure smooth mobility. Each carton (58×36×37cm) contains two units, making it ideal for bulk storage or commercial use.

### FEATURES:

- Strong, durable fabric offers excellent resistance to wear and tear, ideal for frequent travel or heavy use.
- Spacious interior provides ample storage while remaining compact enough for easy handling.
- Lightweight yet sturdy, making it easy to carry and transport.
- Extensive pocket system helps keep your belongings organized, separating essentials and accessories for quick access.
- Includes extra compartments and dividers for enhanced storage options and better organization.
- Discreet, stowable straps allow you to carry the bag as a backpack for versatile carrying comfort.
- Adjustable trolley handle with a stop button makes maneuvering easy and secure.
- Durable, smooth-rolling wheels offer effortless movement over various surfaces.
- Ideal for bulk purchases or storage, each carton conveniently fits two bags.



**Interior Pockets: 52**  
**Exterior Pockets: 4**

Specification	Details
Type	ProStor Heavy Duty Back Pack
Material	600D Polyester
Interior Pockets	52
Exterior Pockets	4
Shoulder Straps	Hidden, stowable design
Trolley Handle	Telescopic with stop button
GTIN	5023003002616



High-quality Nylon wheels



Additional Organizers




Adjustable Trolley Handle

# Get In Touch

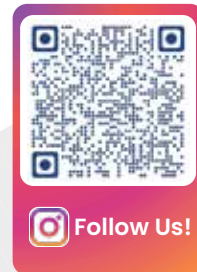
---

 Connexion Electrical Limited,  
9 Carlisle Rd, London, NW9 0HD

 020 8200 5451  
020 8205 3034

 [sales@connexionelectrical.co.uk](mailto:sales@connexionelectrical.co.uk)

 [www.connexionelectrical.co.uk](http://www.connexionelectrical.co.uk)



**Connecting People With**  
**Power**

CONNEXION ELECTRICAL LTD